

# Practice ~ 101

Working



Galleries

EXHIBITING YOUR WORK IN  
& OUTSIDE OF THE REGIONS

## ARTS ORGANISATIONS



**ANR.**

[About](#) [Projects](#) [Resources](#) [What's On](#) [News](#) [Directory](#) [Contact](#)

Q

Submit

Supporting art  
and culture in the  
Northern Rivers.

who  
we  
are

a profile of the northern rivers creative sector

## About ANR

### Our Work

Advocacy

Research

Professional Development

Partnerships

Support and Outreach

Gatherings

Letters of Support

Auspicing

# Practice 101

professional  
development series

Byron Shire

Jun 19



Workshop

## Practice 101: Working with Galleries

Designed for early-career visual artists, this workshop will share an overview of the arts sector and detail how to self-profile and present your work for exhibitions. This foundational workshop has been developed to support Northern Rivers artists interested in exhibiting their work in and outside of the regions.

[More info ↗](#)

Kyogle

Jun 26



Workshop

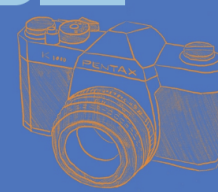
## Practice 101: Working with Galleries

Designed for early-career visual artists, this workshop will share an overview of the arts sector and detail how to self-profile and present your work for exhibitions. This foundational workshop has been developed to support Northern Rivers artists interested in exhibiting their work in and outside of the regions.

[More info ↗](#)

Online

Jul 3



Workshop

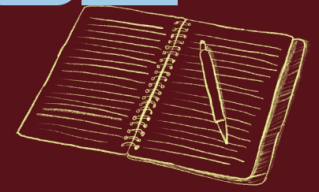
## Practice 101: Traditional Media

Join Arts Northern Rivers for a 1.5 hour interactive online workshop designed to equip participants with practical public relations and media strategies. This session will cover key aspects of engaging traditional media, crafting effective press releases, and building sustainable media relationships.

[More info ↗](#)

Online

Jul 31



Workshop

## Practice 101: Grant Writing

Led by experienced grant writer Jane Fuller, this practical information session serves as a starter guide for mastering the basics of arts project funding. New grant seekers will be guided through a step by step process for identifying whether an idea is application ready, delving into key aspects such as identifying opportunities and preparation.

[More info ↗](#)



For all things  
Art + Culture.

View All

Type

Event

Exhibition

Opportunity

Workshop

Performance

Music

Grant

Location

Northern Rivers Wide

NSW

National

Online

Clarence Valley

Tweed Shire

Richmond Valley

Kyogle

Byron Shire

Lismore Shire

Filters: [x Byron Shire](#) [x Exhibition](#) [x Grant](#) [Clear All Filters](#)



Exhibition

A Tapestry of Blood and Bone

This solo exhibition by local multidisciplinary installation artist Ellen Ferrier focuses on the exploration and creation of regenerative materials, drawing on a diverse range of processes from pre-industrial to bio-technological.



Exhibition

3-Day Art: May Exhibition

Each month Creative Mullum holds a 3-day Art Exhibition in the Mullumbimby Memorial Civic Hall. This month's theme: Time - Explore the essence of time through sculpture, transforming its intangible qualities into enchanting three-dimensional forms that invite reflection on its rhythms, cycles, and fleeting nature.



Grant

Community Initiatives Program

Byron Shire Council opened its Community Initiatives Grant: The Community Initiatives Program is aimed at addressing a community need and increasing community participation, accessibility and inclusion. Grants up to \$5000, available to incorporated community organisations, and community groups.

- CREATIVE FIELD
- CREATIVE SERVICES

+
- DESIGN

+
- DISABILITY

+
- INDIGENOUS

+
- LITERATURE

+
- MUSIC

+
- PERFORMANCE

+
- SCREEN

+
- VISUAL ARTS

+

- AREA
- ☐ BALLINA SHIRE
- ☐ BYRON SHIRE
- ☐ CLARENCE VALLEY
- ☐ KYOGLE
- ☐ LISMORE
- ☐ RICHMOND VALLEY
- ☐ TWEED SHIRE

NORTHERN RIVERS

CREATIVE

Q

=

We are the creative directory for the Northern Rivers

MORE ABOUT US

Jeremy Austin



LISMORE

ANIMATION / DESIGN / GRAPHIC / ILLUSTRATION / MIXED MEDIA / NEW MEDIA / PAINTING / PUBLIC ART / SCULPTURE / VISUAL ARTS /

Mate

Mate

BYRON SHIRE

ANIMATION / CREATIVE SERVICES / DESIGN / FASHION / GRAPHIC / ILLUSTRATION / MARKETING / SCREEN / VISUAL ARTS / WEB / WEB DESIGN / WEB DEVELOPMENT

Blanche Alexander Ceramics



TWEED SHIRE

CERAMIC / DESIGN / VISUAL ARTS /

[Arts Mid North Coast](#)

[Arts North West](#)

[Arts Northern Rivers](#)

[Arts OutWest](#)

[Arts Upper Hunter](#)

[Eastern Riverina Arts](#)

[Murray Arts](#)

[Orana Arts](#)

[Outback Arts](#)

[South Coast Arts](#)

[South East Arts](#)

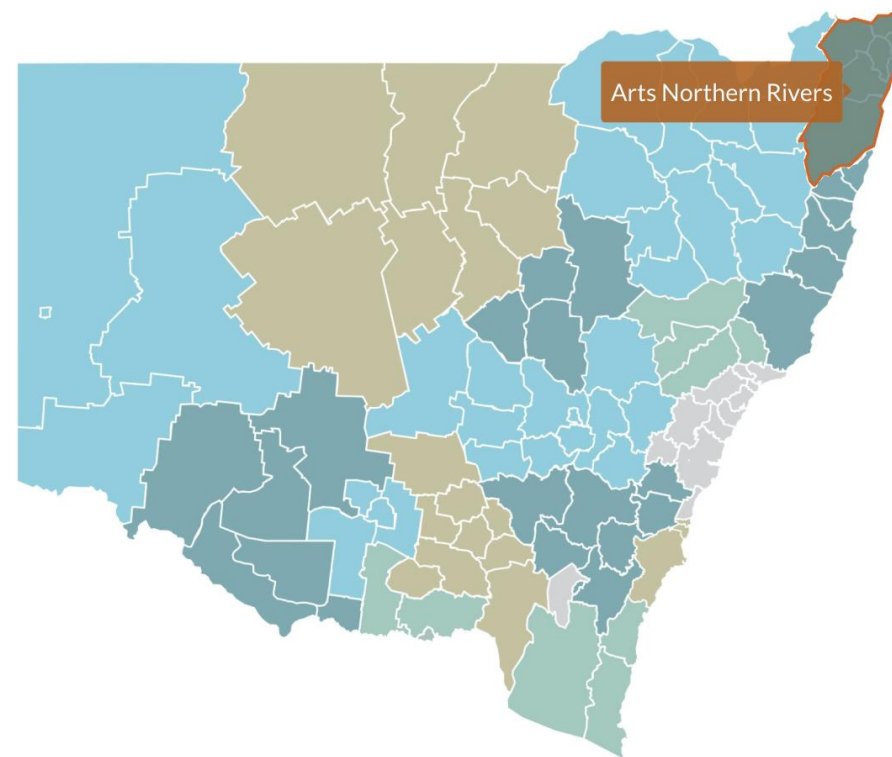
[South West Arts](#)

[Southern Tablelands Arts](#)

[West Darling Arts](#)

[Western Riverina Arts](#)

## REGIONAL ARTS NETWORK





Language ▼

MyServiceNSW

Living in NSW ▼

Working and business ▼

What's happening ▼

Have your say

Easy Read

[Home](#) > [Arts and culture](#) > [Engage with NSW arts and culture](#) > [Get funding and support](#) > Funding calendar

# Funding opportunities calendar Create NSW

Stay up to date with the latest Create NSW grants and funding. See current and upcoming funding opportunities, opening and closing dates and links to apply.







# Welcome to Accessible Arts

Welcome



# Welcome to Creative Australia

How can we help?



Popular

Find a grant

Arts projects - Individuals

Arts projects - Organisations


Login





Okinawa II by Gerwyn Davies.


Gerwyn Davies

# ARTS ORGANISATIONS | NAVA | [visualarts.net.au](https://visualarts.net.au)





 Main Menu

 Login

Search the website 

VOTE FOR ART 2025

 Secure Artists' Futures



#VoteForArt 2025

Image Credit: Anthony Remagnano, Untitled, pencil on paper, 2022.

## Mission

NAVA is a Membership organisation which brings together the many voices of the contemporary arts sector to **improve fundamental conditions of work and practice**. We do this through advocacy, education and the [Code of Practice](#).

## Vision

The visual arts are vital, sustainable and ethical.

Code of Practice + Artist Fees

READ

Membership + Insurance

JOIN

Donate to NAVA

SUPPORT

NAVA Grants

APPLY

NAVA Newsletter

SUBSCRIBE

### News

Visual artists leaving the sector: New report confirms urgent need for action, 2 April 2025.

Read More

### Media Release

Monash University's postponement of exhibition featuring Khaled Sabsabi undermines artistic and academic freedom.

Read More

### NAVA insurance

NAVA launched a new and improved insurance package for Members on 1 February 2025.

Read More



Code of Practice for Visual Arts, Craft and Design

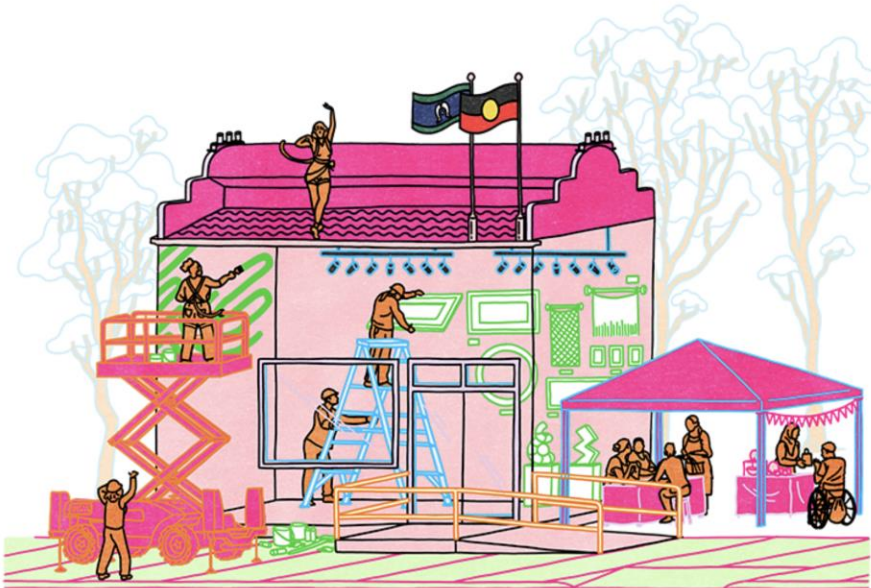


Illustration by Claudia Chinyere Akole © 2024  
ID: A colourful graphic line illustration of trees, an art gallery and people all engaging in work related to the arts.

Fees

Artist Fees (new work)

Artist fees are paid to artists when commissioned to create a new work. It is payment for the time, ideas, labour and skills that an artist expends in creating works and making them available to the public.

Artist fees are paid to artists for participating in a non-selling exhibition or exhibitions where the focus is not on sale of work.

Expand All + Collapse All -

Early-Career Artist



Exhibition Type	Minimum Fee Range for Small Organisations	
Solo - project space	\$788.29	\$867.12
Solo - gallery	\$2,245.08	\$2,469.59
Two (2) person	\$1,571.56	\$1,728.71
Group of 3 to 5 artists	\$1,122.54	\$1,234.80
Group of 6 to 10 artists	\$673.53	\$740.88
Group of 11+ artists	\$404.12	\$444.53

## Payment

Artists should be paid for services including exhibitions, public programs, talks, workshops etc. The NAVA Code of Practice includes schedules of fees for artists at all career stages. NB: these are a best practice guide only – artist payments may vary depending on budgets.

NAVA Code of Practice: [code.visualarts.net.au](http://code.visualarts.net.au)

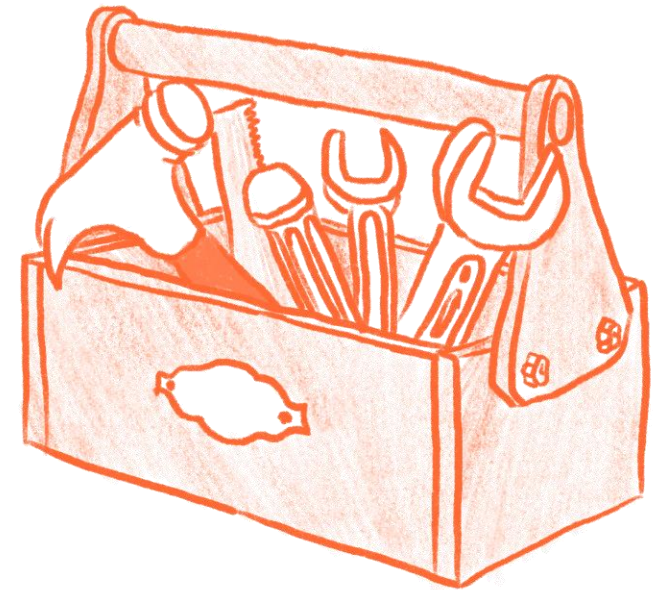
## Contracts

Artists should be engaged contractually for all projects and programs. Arts Law Australia has a range of contract templates and advocacy services: [artslaw.com.au](http://artslaw.com.au)

## Insurance

Artists at all stages must have insurance. Peak bodies such as NAVA and Arts Regional Arts NSW offer membership + insurance packages that include:

- Public liability
- Products liability
- Property in custody or control
- Tenants liability
- Personal accident
- NB: some insurances are extra such as public art and kiln use insurance.



## REGIONAL GALLERIES & COUNCIL-RUN SPACES





[About](#) ▾ [Exhibitions](#) ▾ [Programs](#) ▾ [Collection](#) ▾ [Accessibilty](#) [Join and support](#) ▾ [Visit](#) ▾

[Home](#) > [Exhibitions](#) > [Exhibition Proposals](#)





Installation view, Jana Moser and Lucia Canuto, 2023. Photo by Cherie Winter.



## EXHIBITION PROPOSALS

If you are interested in exhibiting at Lismore Regional Gallery, we are seeking proposals to present new work in the ground floor Jenny Dowell Gallery.

Prominently located at the Gallery entrance, the Jenny Dowell Gallery is prioritised for local artists in a rotating program of exhibitions each year. With a large floor-to-ceiling, public facing window, the exhibition will be highly visible to passers-by and audiences engaging in activities in the Lismore Quadrangle.

Artists receive a fee of \$500 for the exhibition and are responsible for its installation and de-installation.

Our program is planned in advance and is balanced each year to reflect the diverse interests and voices of people from our region. In our upstairs galleries, we showcase curated exhibitions, touring exhibitions, and a rotation of the permanent collection.

### Gallery Specifications

- **Floorplan.**
- Space is approx. 9.8m x 3.5m x 3.4m high.
- Gallery lighting and hanging tracks.

### Proposal requirements





Search

Visit

What's on

Discover

Support

## Exhibition proposals

### Artists of the region – PLATFORM

PLATFORM is Tweed Regional Gallery's exhibition program for artists of the region. It provides artists at any stage of their career with a professional venue for the exhibition of new work.

Download the [application guidelines](#) (PDF, 2MB) to find out when and how to apply, along with more information about the exhibition spaces.

**Applications for 2026–2027 exhibitions close on Tuesday 12 May 2026.**

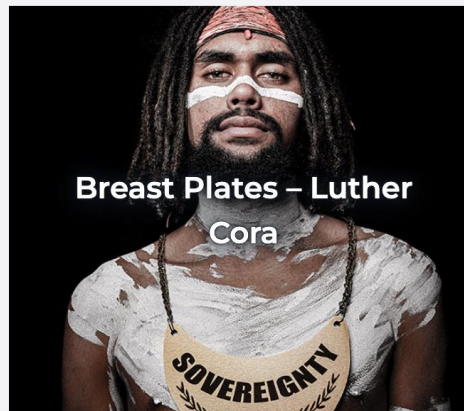
Applicants must be a resident of the Tweed, Kyogle, Byron, Ballina, Scenic Rim Shires, Lismore or City of Gold Coast. In the case of a group show at least half the applicants must satisfy this residential requirement.

Through PLATFORM artists will work alongside Tweed Regional Gallery staff to deliver a solo or group exhibition in the Gallery. Exhibition spaces available under PLATFORM are the Macnaughton Focus Gallery and the Boyd Gallery.

Tweed Regional Gallery strongly encourage First Nations artists, artists from culturally and linguistically diverse backgrounds, deaf and disabled artists, and LGBTQIA+ artists to apply.

[Apply online](#) >

## Exhibitions



Events

Exhibitions

Subscribe

Collection

For Artists

## Exhibition Proposals

Grafton Regional Gallery is accepting exhibition proposals for its 2026 – 2028 program. Clarence Valley and First Nations artists, emerging, mid-career, established artists, and curators are encouraged to apply.

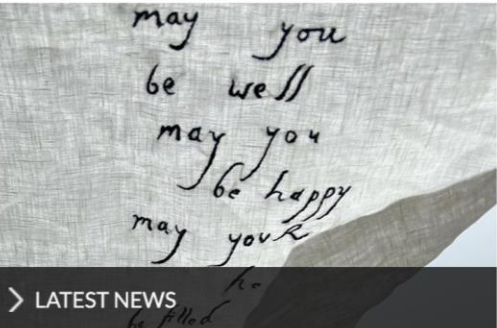
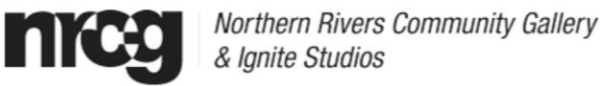
This is an open call out for exhibitions with no closing date. Applications will be reviewed biannually. Proposals are assessed considering lead time, feasibility, program relevance, artistic calibre, budgets, and resource capacity.

To apply, download the [Exhibition Proposal Guidelines and Application Form here](#) (PDF, 96KB). Applicants will be notified by email regardless of outcome.

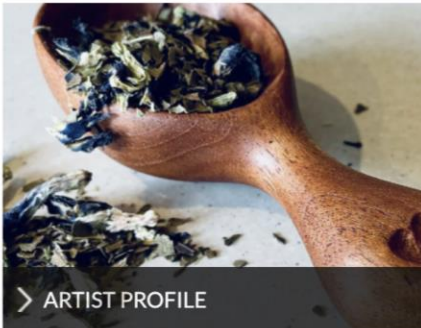
Please email the Gallery if you require further information, we are happy to support any applicants with the submission process. Email: [gALLERY@clarence.nsw.gov.au](mailto:gALLERY@clarence.nsw.gov.au)







> LATEST NEWS



> ARTIST PROFILE

DONATE NOW

E-NEWS SIGNUP

CONTACT

## APPLY TO EXHIBIT



Once a year NRCG welcomes proposals from artists, designers, curators, community and cultural groups in all art forms that display innovative ideas and approaches to contemporary arts practice. We value socially engaged, research-based, and experimental projects that will captivate and challenge our audiences. We strongly encourage applications from First Nations artists, artists from culturally and linguistically diverse backgrounds, Deaf and Disabled artists and LGBTQIA+ artists.

Applications are accepted only during an exhibition call out period. Applications must be received by the submission deadline to be considered.

### KEY DATES 2025

- APPLICATIONS OPEN | Tuesday 1 July 2025
- APPLICATIONS CLOSE | Sunday 31 August 2025
- NOTIFICATIONS | by end October 2025

For further information or enquiries contact: [nrcg@ballina.nsw.gov.au](mailto:nrcg@ballina.nsw.gov.au) or phone the Gallery on 6681 0530



EXHIBIT |

Roxy Gallery

|

[www.facebook.com/Roxy-Gallery](https://www.facebook.com/Roxy-Gallery)



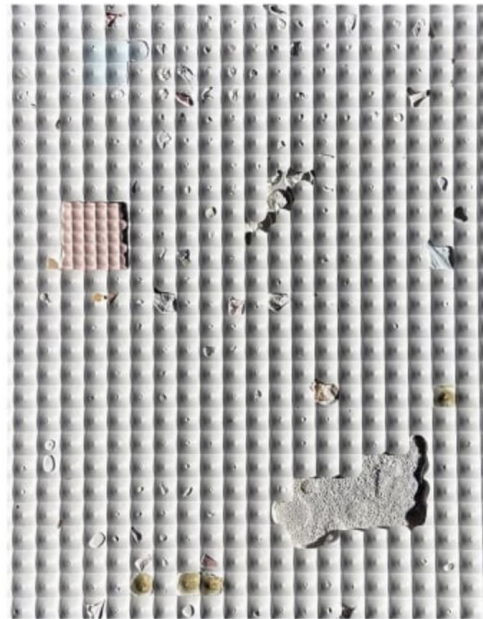
**Roxy Gallery**

877 followers • 40 following

 Call Now

 Message

 Follow



## APPLICATIONS FOR 2026 ARE OPEN

---

### IMPORTANT DATES:

5 April 2025: Applications for the 2026 exhibition program open

19 June 2025: Practice 101 workshop with Arts Northern Rivers

22 August 2025: Applications for the 2026 exhibition program close

12 September 2025: Applicants are notified of the outcome of their application by email

**APPLY NOW**

**LEADING HAND | RHYS COUSINS**

OPENING 5 – 7PM FRIDAY 6 JUNE, CONTINUES UNTIL 5 JULY 2025

# APPLICATIONS OPEN | Lone Goat Gallery | [www.lonegoatgallery.com](http://www.lonegoatgallery.com)

## Application Guidelines

**APPLICATION CRITERIA** The following criteria are all equally considered by the assessment panel:

**APPLICATION:** Complete Application including all requested information and visual support material.

**INTENTION:** Clear and communicated vision of the proposed exhibition.

**CURATORIAL:** Applications are considered in the context of program diversity. We are an equal opportunity organisation.

**ACCESSIBILITY:** We welcome applications from artists at all levels of experience from emerging to established.

**REGIONAL FOCUS:** Northern Rivers based artists who have not previously exhibited at Lone Goat Gallery receive priority.

**Deadline: 22 August 2025**

**Notification: 12 September 2025**

Strong preference for applications featuring new works, innovative ideas, and exhibition proposals unique to Lone Goat Gallery.

Applications are assessed by a panel of art-industry peers who select exhibitions for our program. The application selection process is competitive.

Applications are considered on merit, based on support material, images and text, alongside the Application Criteria.

We provide extensive professional curatorial, production and promotional support throughout the development and staging of all exhibitions.

For detailed information on making an application please contact [lonegoatgallery@byron.nsw.gov.au](mailto:lonegoatgallery@byron.nsw.gov.au)

# ARTIST TOOLKIT | APPLICATIONS

## Writing a Proposal

- Do your research
- Touch base with the gallery / organisation prior to submitting your application
- Use simple language
- Stick to suggested word limits and respond to all questions
- Open with a strong, clear project overview that succinctly communicates your idea
- Write directly and be specific when writing about your work.
- Outline strategies for audience engagement if relevant
- A strong exhibition has unifying themes, ideas or questions that link the art being shown
- Select images carefully. Do they reflect the work you propose to show/make? Are they the best representation of your practice? Clearly describe the exhibition plan: how will viewers experience the work? Consider the scale and layout of the gallery space.
- Submit high-quality images of your work. Images should be bright, clear, and photographed on a neutral background. The stronger your images, the stronger the proposal
- Ask for feedback from another artist or colleague
- Submit your application on time



## Writing a CV

- Personal Details: name, location, phone number, website address, email
- Include a short bio in sentence form
- Education and/or training
- Grants and awards
- Exhibitions
- Commissions
- Collections
- Current Gallery Representation and/or Agent
- Bibliography



## SPACES FOR HIRE & COMMERCIAL



# SPACES FOR HIRE & COMMERCIAL | M|ARTS

M|ARTS  
HARTFORD PRESENCE

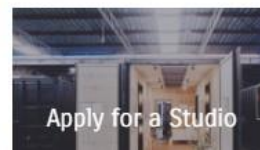
[THE PEOPLE](#) [THE VENUE](#) [ABOUT US](#) [CONTACT US](#)



[News](#)



[Visit Us](#)



[Apply for a Studio](#)



## Community Arts Hub at Byron Community College

Located in the iconic Chincogan Mowers building in Mullumbimby, the Community Arts Hub is a vibrant creative space supported by Byron Community College.

The Hub includes:

- A professional **gallery space** for artists to showcase their work
- A **co-working/studio space** for artists and creatives
- Purpose-built **learning studios** for visual arts and printmaking

This unique venue brings together exhibitions, education, and creative space for making and gathering, supporting artistic development and community connection across the region.

The Hub's mission is to make the arts accessible to everyone, inviting all to participate and explore their creative potential. Whether you're an aspiring artist, a seasoned professional, or someone looking to try something new, the Community Arts Hub is here to support your artistic journey.

### Get Involved

Artists and makers can access the space in a range of ways:


- Apply to exhibit in the gallery
- Hire a studio or workspace for personal projects
- [Join a creative course or weekend workshop](#)

We also welcome collaborations, partnerships, and new ideas from the creative community.

**ENQUIRE HERE** for exhibition proposals, venue hire, or general enquiries.









**Micro 40 x 40**

Group Exhibition Artist Call Out

Micro 40 Submissions





Current

Past

Future

# COMMERCIAL & REPRESENTATION

# Pack Gallery

[packgallerystudio.com.au](http://packgallerystudio.com.au)



[HOME](#) [ARTISTS](#) [ABOUT](#) [CONTACT](#)

**PACK GALLERY HAS MOVED.** We are now at 3/1 Acacia Street , Byron Bay Industrial Estate

Showcasing highly collectable, established and emerging contemporary artists from Northern NSW and beyond.

We acknowledge and pay our respects to the Arakwal people of the Bundjalung nation.



CAMILLE BATURIO



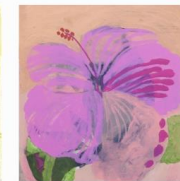
MATT BAID



PAULA BANNAN



BRENDA PAGE



KARLEE RAWLINGS



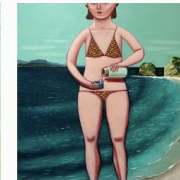
MARC RENSHAW



DAMIAN BISCONTI



ROSS BOOKER



KIRSTEN CHAMBERS



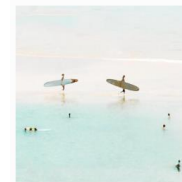
ROSIE STOLLERY



LEAH THESSSEN



CHRISTINE WILCOCKS



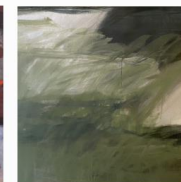
FRANCIS CIOAKE



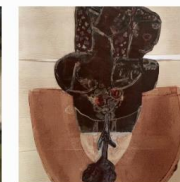
CARLTON COOK



JOSEPHINE EHLERS



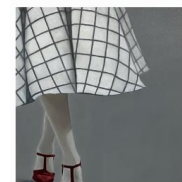
ANDREA NEWTON



GABRIELA SCHEMMER



MICHELLE DAWSON



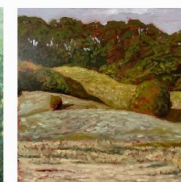
CEDAR JETTIS



SHILASH NOICE



JUDY GREENFULL



JIRAND DAUBY

## ARIS, COLLECTIVES & STUDIOS





## Aboriginal Artist Run Initiative

A First Nations vision of connection, creativity, inclusivity and wellness for all.

[Pay The Rent](#)[Who we are](#)

Amarina AARI is Lismore's first Indigenous owned and run gallery that hosts exhibitions by First Nation artists who have a connection to Bundjalung.

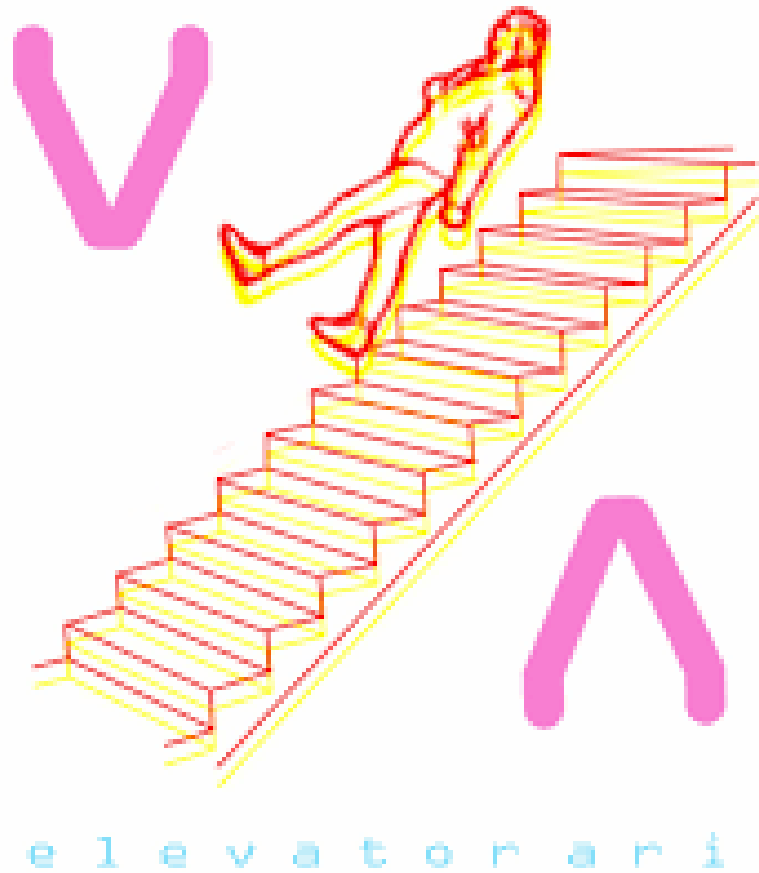
Located in the subtropical mountains and fertile valleys of Bundjalung, in the flood prone by thriving heart of Dumberimba (Lismore), the gallery is an accessible drive from Byron Bay, the Gold Coast and Ballina airport. Founded in 2021, the gallery and it's ever growing artist base, feature a well-rounded exhibition calendar.



ARIs, COLLECTIVES, STUDIOS

| Elevator ARi

| [@elevator\\_ari](https://www.instagram.com/elevator_ari)





ARIs, COLLECTIVES, STUDIOS

|

softwash

|

[@ softwash](https://www.instagram.com/softwash)

*softwash*

Responding to our conditions





## ART PRIZES





# OPPORTUNITIES | LOCAL ART PRIZES

## Grafton Regional Gallery



### Clarence Valley Indigenous Art Award (CVIAA) 2025

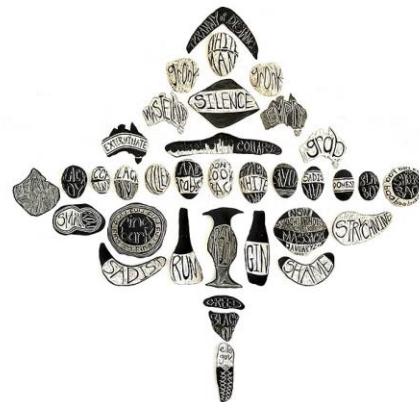
The Clarence Valley Indigenous Art Award (CVIAA) was established in 2007 and open to First Nations artists who reside on Bundjalung, Gumbaynggirr, and Yaegl Country.

## Lismore Regional Gallery



### JADA

The \$40,000 Jacaranda Acquisitive Drawing Award (JADA) is Australia's richest regional drawing award.



### KOORI MAIL INDIGENOUS ART AWARD

## Tweed Regional Gallery



### Olive Cotton Award

A biennial national award for excellence in photographic portraiture in memory of photographer Olive Cotton.



### Wollumbin Art Award

The Wollumbin Art Award (WAA) is a biennial \$30,000 award open to artists living in the Tweed, Ballina, Byron, Kyogle and Scenic Rim Shires, as well as Richmond Valley, Lismore and Gold Coast City.

# OPPORTUNITIES

|

# NATIONAL ART PRIZES

**Entries  
Now Open**

Entries close 13 July  
For more info  
[woollahragallery.com.au](http://woollahragallery.com.au)



**Sanné Mestrom**  
*Sleeping Muse*  
Winner WSSP 2017  
Judge WSSP 2025

**the  
woollahra  
small  
sculpture  
prize**

**CALL FOR ENTRIES**

**2025 CALLEEN  
ART  
AWARD**

**COWRA REGIONAL ART GALLERY**

**ENTRIES CLOSE 6 JULY, 2025**

**ENTER ONLINE: [cowraartgallery.com.au](http://cowraartgallery.com.au)**

CENTRAL COAST COUNCIL - GOSFORD REGIONAL GALLERY

## Gosford Art Prize 2025 - Call for Entries

Gosford Regional Gallery is pleased to present the 2025 Gosford Art Prize. This year the prize pool has increased in all categories. The acquisitive Gosford Art Prize winner is awarded \$25,000.



AWARDS & PRIZES

### Opportunity Details

 SHARE

**CLOSING DATE** Jul 7, 2025 **LOCATION** National **ARTFORM** All Arts

YARRILA ARTS AND MUSEUM

## STILL: National Still Life Award

STILL: National Still Life Award is Yarrila Arts and Museum's national biennial acquisitive art award.



### Opportunity Details

 SHARE

**CLOSING DATE** Jul 6, 2025   **LOCATION** Australia   **ARTFORM** Visual Arts



HORNSBY SHIRE COUNCIL

## Hornsby Art Prize call for entries

The Hornsby Art Prize is open for artists working in painting, drawing, printmaking, photography, and sculpture.

AWARDS & PRIZES

# HORNSBY ART PRIZE 2025



### Opportunity Details

 SHARE

**CLOSING DATE** Aug 7, 2025   **LOCATION** Australia   **ARTFORM** Visual Arts

# OPPORTUNITIES | Listings

[Commissions](#)[Grants](#)[Development](#)[Competitions](#)[Prizes](#)[Residencies](#)

Search the latest Art Prizes, Artist Call Outs, Artist Residencies, Grants and more....

Search

ARTFORM



APPLICANT TYPE



APPLICANT LOCATION




ADVERTISE

## Opportunities Closing Soon

[Show all opportunities](#)

Opportunities Grants

**FEATURED**



**BOWNESS20**  
William & Winifred Bowness Photography Prize  
\$50,000 Acquisitive first prize

**ART PRIZE GUIDE**

### The 2025 Bowness Photography Prize

Submissions are now open for the \$50,000 Bowness Photography Prize at the Museum of Australian Photography (MAPh). Artists working with photography...

**PHOTOGRAPHY** Closing 13 Jun 2025

**FEATURED**



**ART PRIZE GUIDE**

### Mullins Conceptual Photography Prize

Calling all photographers! Enter the Mullins Conceptual Photography Prize 2025 for a chance to win \$30,000

**PHOTOGRAPHY** Closing 13 Jun 2025

**MELBOURNE**




**THE INKUBATOR**  
SLEMANI

**PROFESSIONAL DEVELOPMENT**

### The INKubator - a Virtual Writers Room

The INKubator is a virtual writers' room connecting 5 writers from Slemani and 5 writers from Melbourne.

**WRITING AND PUBLISHING** Closing 15 Jun 2025



**First Nations Creative Exchange with Na Djinang Circus**

**EXPRESSION OF INTEREST**

### First Nations Creative Exchange with Na Djinang Circus

Maribyrnong Arts & Culture is partnering with Na Djinang Circus to develop and profile First Nations performing arts leaders of...

**PERFORMING ARTS** Closing 15 Jun 2025

# ARTIST TOOLKIT | PHOTOGRAPHY |

Artists are required to submit work digitally for exhibitions, art prizes, grants, talks, promotion, and social media profiles. Good photography offers the first impression of an artist's work.

Take time to ensure you document your work to reflect it at its best.

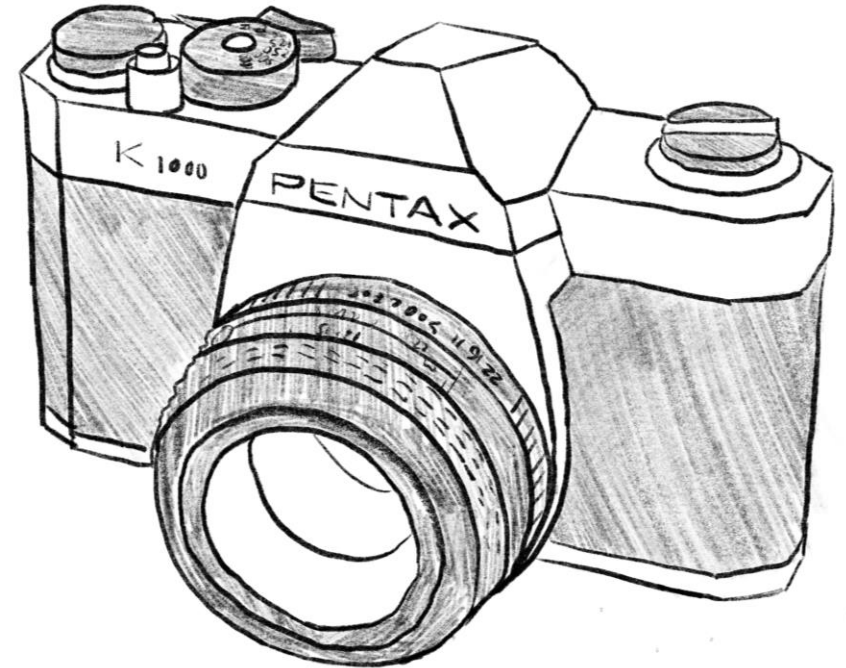
Remember: selection panels are generally comprised of artists and arts professionals who are used to looking at good quality images.

Poor quality images may be dismissed by selection panels and curators – they reflect poorly on the work and on the professionalism of the artist.

## Simple rules for good photography

- Works are either hung on a wall or lying flat on the ground when photographed to avoid distortion – do not submit images on an angle, or propped against a wall
- Light your works properly
- Get to know your camera settings
- Avoid distortions such as angles, blurring, light glare
- Edit images: crop out background, including frames; colour correct where necessary
- 3D images: use a neutral backdrop to eliminate distractions in the background

Documenting artwork is a skill. Many artists engage professional artwork photographers when possible.

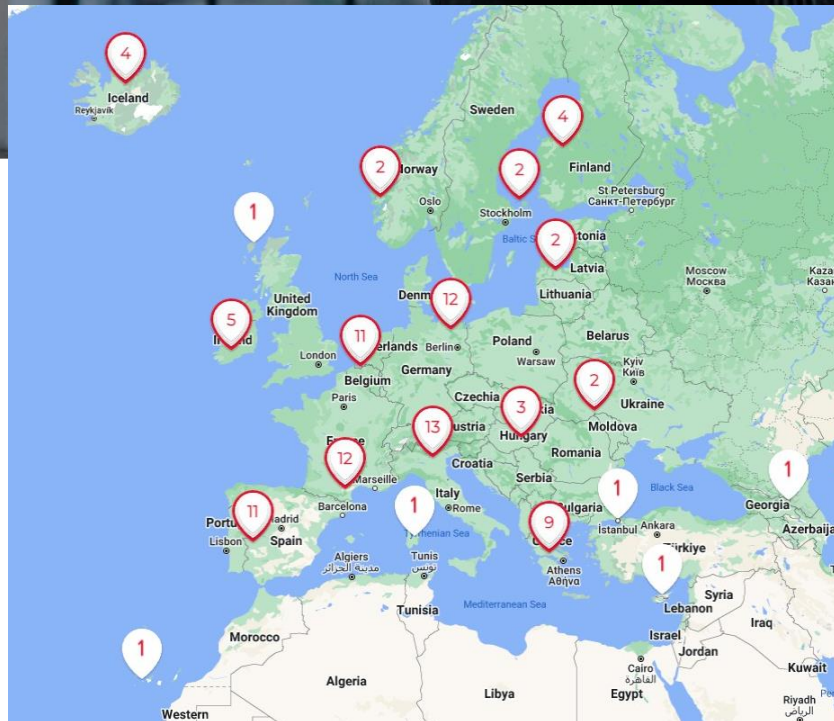




## RESIDENCIES

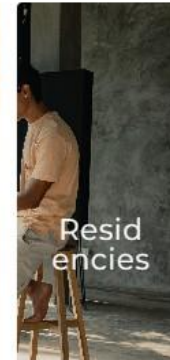


# Res Artis: Worldwide Network of Arts Residencies



## Explore Res Artis

Uncover open calls for arts residency applications, and find news, events and residencies





Collection

Learn

### Exhibition proposals

**Artist in residence studio**

The Nancy Fairfax Artist in Residence studio is an on-site, live-in studio available to visual artists living and working in Australia. The residency program encourages arts practice and creative engagement between artist, community and place.

### Self-funded residency

### Funded residency

### Self-funded residency program

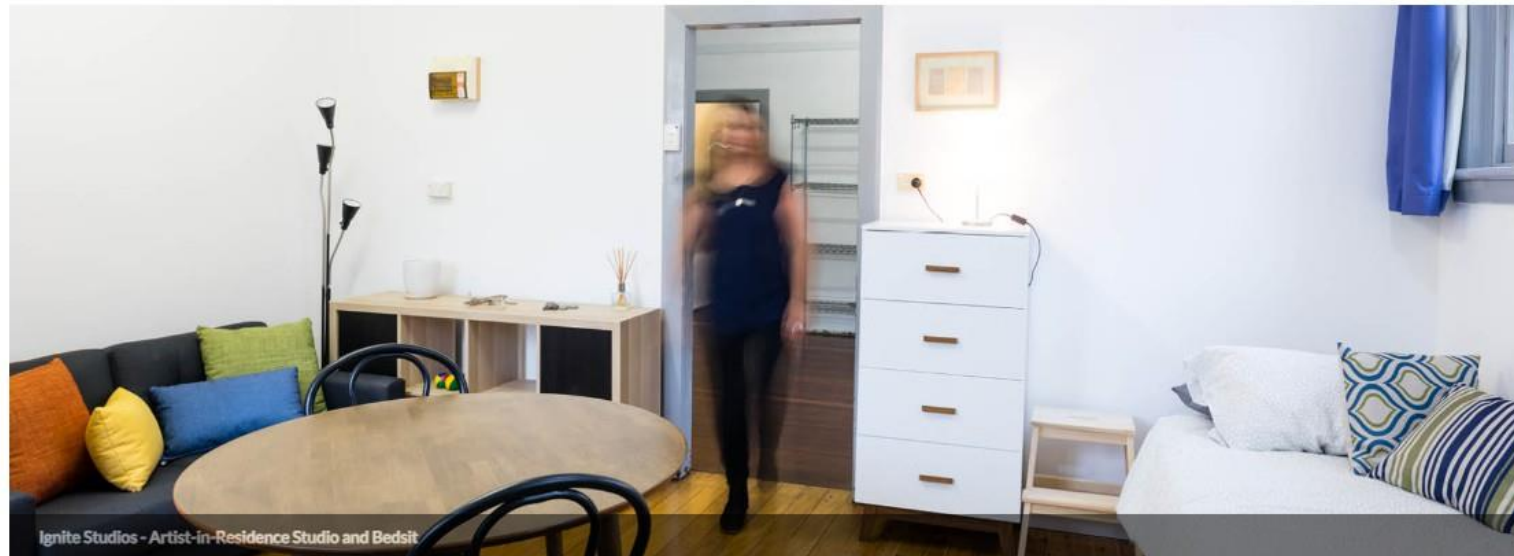
Artists are invited to apply to rent the Nancy Fairfax Artist in Residence Studio. The program is subsidised, making the rental fee \$350 per week (plus GST). There is no outcome exhibition or programing in relation to self funded residencies.







## ARTIST RESIDENCY



Ignite Studios - Artist-in-Residence Studio and Bedsit



### IGNITE STUDIOS ARTIST-IN-RESIDENCE PROGRAM

The *Ignite Studios* AiR program provides a single artist time and space to expand on their artistic practice, researching and experimenting with ideas for new work or new ways of



About

Membership

Artist Residencies

Workshops & Events

Login



APPLY FOR MEMBERSHIP

Make a donation

News BLOG



RESIDENCY 2025

### ***Residency includes***

- *Free Artist accomodation*
- *Free studio space*
- *Transport costs and allowances covered*
- *Opportunity to meet with local artists*
- *Guided tours on Country with Wontanella Tours*

**Applications close 30th June.**

Images from Winter residency 2024: Zev Tropp, work by Rapheal Jerripin Boodjarn , Wontanella Tours, Artist talk Raphy and local artist Krystal Evans, below Chris Brown workshop.



# RESIDENCIES | The Corridor Project |

[www.thecorridorproject.org](http://www.thecorridorproject.org)

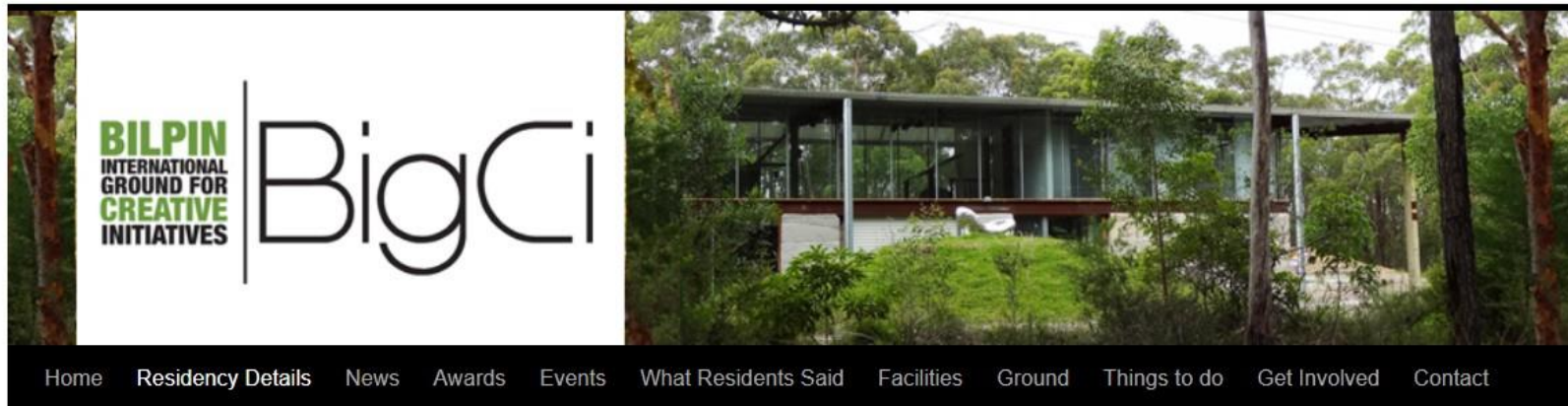
the CORRIDOR project

[ABOUT](#) [RESIDENCIES](#) [EXHIBITIONS](#) [SCIENCE-ARTS HUB](#) [EVENTS](#) [PROJECTS](#) [NEWS](#) [CONTACT](#)



CORRIDOR project offers a range of arts and cultural residence opportunities offered by our organisation and in partnership with Orange Regional Gallery, Lismore Regional Gallery and Arts OutWest. Infrastructure includes onsite accommodation x12 bedrooms, kitchen, dining, living quarters, studio spaces and equipment. We offer both self directed and mentored artist-in-residence for individuals and groups contact us below to find out more.





[Home](#) [Residency Details](#) [News](#) [Awards](#) [Events](#) [What Residents Said](#) [Facilities](#) [Ground](#) [Things to do](#) [Get Involved](#) [Contact](#)

## Artist Residency

Artists undertake BigCi residency for an agreed period of time to develop ideas, create new work or to deepen their existing art practice. They stay either at the Art Shed, the Barn, or the House, subject to availability and individual project requirements that will be discussed with each applicant.

The Art Shed, the Barn, the House, and the 8 acres of the property's bush land are available for all kinds of initiatives. The extraordinary beauty of the surroundings provides a ground for creativity and professional development.

Artist residency proposals are welcome throughout the year – each season has its own creative possibilities. It is recommended that applications are submitted well in advance.

Successful applicants are charged a subsidised residency fee, which is AUD\$300 per person per week for Australian artists and AUD\$350 for International artists. Please note that these subsidised fees are available only to self-funded artists. Our rates for organisations are AUD\$600 per person per week for Australian artists and AUD\$700 per

### Call for Submissions

Submissions are currently accepted for artist residencies and creative initiatives. For more information, please [click here](#)

### Call for Support

If you are interested in supporting, collaborating or getting involved with BigCi in any form, please [click here](#)

**If you wish to get regular updates from us:**

[Click here](#)

**Like us on the Facebook**



# ARTIST TOOLKIT | RESIDENCIES |

## Artist residency programs provide valuable opportunities for:

- Time-out to focus on creative practice
- Exploration and experimentation
- Networking and collaboration Promotion and recognition
- Access to a studio and specialist equipment (depending on residency)
- Professional development and building a CV

## Residency models:

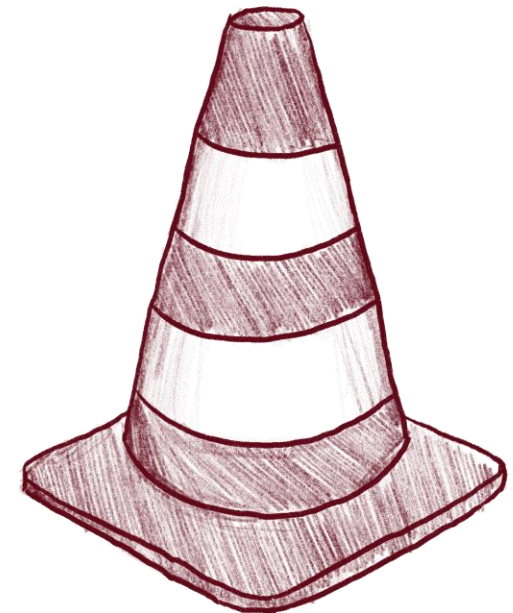
- Fee paying
- Subsidised (either free or reduced fee) Mix of fee-paying & subsidised
- Outcomes based e.g. exhibitions, public programs, donation of work Non-outcomes based

## Artists should be:

- Professional practising artists at any stage of their career (depending on the type of residency)
- Able to communicate their artwork to a general audience self-directed
- A good 'fit' for the type of residency program
- Open to participating in a public program if required e.g. talk, workshop, studio tour Willing to assist in promoting the residency program

## Applications:

- Submissions: Call-outs for submissions are generally held annually
- Project overview: Application/cover letter outlining practice/project and how the residency will benefit your practice/project
- CV: generally no more than 2 pages outlining your professional career Documentation: Examples of your work.
- Examples of work: Images must be clear, ideally professionally photographed, reflect current practice, and reflect the nature of work proposed in your application
- Referees: Names and contact details of up to two (2) professional referees familiar with your practice may be required



Practice ~ 101

**ANR.**